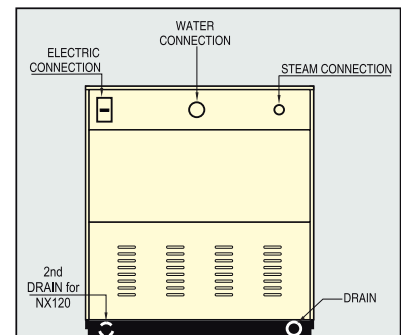
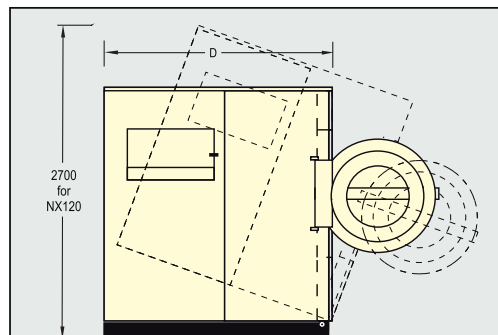
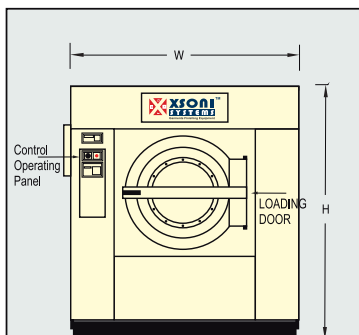


Washer Extractors, High Spin, Soft Mount.



- ✓ 7" Colour Touch Screen
- ✓ Available in Hindi & English Languages
- ✓ 50 Standard Programs for Wash & Dry
- ✓ Total Memory 90 Programs
- ✓ Auto Service & Maintenance Reminders
- ✓ Recipe Cycle Data Print Option
- ✓ Wireless Communication Programming Access

- Front Loading
- Stainless Steel Cabinet
- Computer Controlled
- 15, 30, 60 & 120kg. Capacity





XSONI CONNECT

We are introducing the new XSONI Connect. Real-time interactive data analytics dashboard.

Our Digital Monitoring Solution equips you with the reporting, monitoring, and configuration tools you need to focus on what you do best: making informed business decisions. Our user-friendly interface and simple tools, such as a dashboard to view all areas of your business and a customer app, allow you complete control over your firm, resulting in optimum productivity and maximum profit.

An Interactive Dashboard can help in:

- ✓ Revenue turns, and various other statistics can be displayed on interactive dashboards
- ✓ For further analysis, exportable Excel stats of the machine's usage and performance
- ✓ The date range can be customized to display by day, week, month, and so on
- ✓ Remotely reset your washing and drying machines when they are blocked
- ✓ Control the lights, fences, and other devices remotely



REAL-TIME PERFORMANCE DATA



REMOTE START & SYSTEM MONITORING



URNS PER DAY



REBOOT MACHINES FROM THE DASHBOARD



MOBILE APP FOR YOUR CUSTOMERS



SEND NOTIFICATIONS THROUGH THE APP



XSONI Advanced HMI



VNC SERVER



WEB SERVER



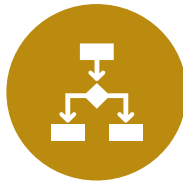
EMAIL



DATA LOGGING



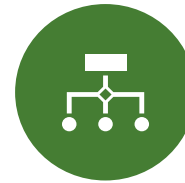
ALARMS



**RECIPE
MANAGEMENT**



TREND



FTP



OBJECTS

XSONI Advanced HMI offers variety of objects like buttons, bar graphs, lamps, meters, multilingual text, calendar, clock etc. along with data display / data entry and other static objects.



VNC SERVER

VNC stands for Virtual Network Computing. It is a cross-platform screen sharing system that is created to remotely control another computer.



DATA LOGGING & RECIPE

XSONI Advanced HMI supports powerful data logging with the option of using internal memory or external memory for logging the data. It also supports powerful recipe wizard.



TREND & XY PLOT

XSONI Advanced HMI supports powerful graphical representation of tag against the real time. It also supports graphical representation of historical data.



ALARM

XSONI Advanced HMI supports real time as well as historical alarms. Using Alarm object, user can visualize generated Alarm with system. For better Visualization multiple fonts, colours, etc.



CONNECTIVITY

XSONI Advanced HMI provides connectivity over USB, Ethernet and Serial ports. User can download and upload the application to / by the device and monitor logic and data.



FTP

XSONI Advanced HMI supports FTP Host & Client. This feature is provided to transfer logged data from an external device to their FTP server.

INVERTER DRIVE



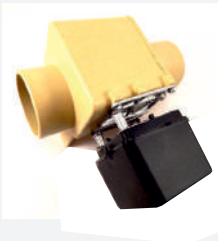
Single motor variable frequency drive (VFD) gets all precision speeds required for washing, distribution, low & normal Spin. **The energy efficient drive consumes less energy & reduces electric peak load demands.**

TUNNEL SUSPENSION



Tunnel Suspension system that absorbs even severe out of balance load vibrations. Strategically placed centre of gravity and mass weight placement aid in controlling movement and results in 90% reduction of force transferred to floor.

MOTORIZED DRAIN VALVE



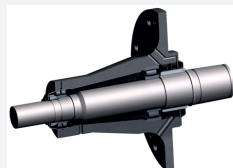
"Non Clog Full Clear Port" motorized drain valve flushes all the lint during drain. Easily accessible electric motor is splash proof. Manual lever to activate drain in case of motor failure. Fail safe, rust free operation through out its life.

AUTO CHEMICAL DISPENSER



A five compartment dispenser is mounted at the side of the machine at a convenient height and flushes automatically through powerful jets as and when supply signalled by the computer.

BEARING HOUSING



The housing has wide roller bearings to have large contact area to disperse dynamic forces. Packed with lubricants & Sealed. The self lubricating twin water seals & bearing seals are air separated. **Prevents contact of water with the bearings.**

XSONI CONNECT



It integrates all aspects of business management through one partner-XSONI. Mobile payment is available. Financial and operational data and analytics. Customer engagement. Service and maintenance. It's all there in one, simple, cloud-based platform.

MODEL	CAPACITY dry weight per charge (1:10)	CYLINDER SIZE VOLUME	DRIVE MOTOR	TILT MOTOR	FINAL EXTRACT SPEED (RPM)	LOADING DOOR OPENING	WATER CONNECTION CONSUMPTION	DRAIN	HEATING		DIMENSIONS W x D x H	NET WT / CRATED WT CRATED SIZE: WxDxH CRATED VOLUME
									STEAM CONN. STEAM CONSUMP.	ELECTRIC LOAD		
NXS-15 NXE-15	15 Kg	Ø 710 x 380 154 Ltrs	3 HP	-	870 to 940 RPM 304 to 355 G	Ø 400	Ø20 (0.75" BSP) 200 Ltrs / cycle	3"	Ø15 (0.5" BSP) 15 Kg / hr	9 KW	1060 x 1130 x 1600	1000 KG/1250 KG 1360 x 1430 x 1900 3.5 M ³
NXS-30 NXE-30	30 Kg	Ø 900 x 500 318 Ltrs	7.5 HP	-	780 to 840 RPM 305 to 354 G	Ø 500	Ø25 (1" BSP) 400 Ltrs / cycle	3"	Ø15 (0.5" BSP) 30 Kg / hr	12-18 KW	1370 x 1450 x 1725	1310 KG/1550 KG 1570 x 1650 x 1925 4.92 M ³
NXS-60 NXE-60	60 Kg	Ø 1100 x 650 617 Ltrs	15 HP	-	700 to 760 RPM 301 to 355 G	Ø 500	Ø38 (1.5" BSP) 800 Ltrs / cycle	3"	Ø15 (0.5" BSP) 60 Kg / hr	24-36 KW	1610 x 1750 x 2000	2300 KG/2600 KG 1810 x 1950 x 2200 7.9 M ³
NXS-120T Forward Tilt	120 Kg	Ø 1350 x 850 1216 Ltrs	23 HP	1.5 KW	635 to 685 RPM 304 to 353 G	Ø 800	Ø50 (2" BSP) 1600 Ltrs / cycle	3" 2 Nos	Ø25 (1" BSP) 120 Kg / hr	-	1950 x 2250 x 2300	4310 KG/4700 KG 2150 x 2450 x 2500 15.2 M ³

Note: a) All Dimensions are in MM. Standard Machines Operate on 415 ±10%, 3 Phase, 50HZ, CYS AC Electric Supply, Special Voltage on request.
b) Machines are also made to order as per customer's requirement & specifications.

NXS: Steam | **NXE:** Electric